

STATE WHEN ORDERING

FW = mm
 FH = mm
 COW = mm
 COH = mm
 CL = mm

Surface treatment

☐ Silver anodized
 Special anodized
 RAL
 Special powder coating

Options see layers:

☐ Alternative F (concrete/brick)
☐ Alternative U (aluminium/steel)

Glass option see drw. 1009030

Glass code:

Installation

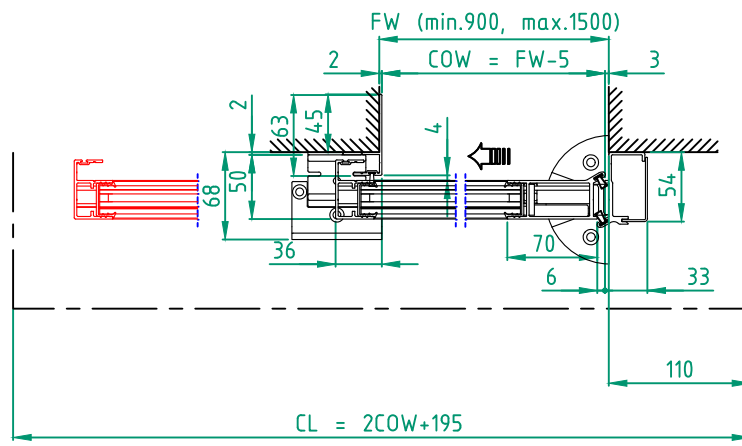
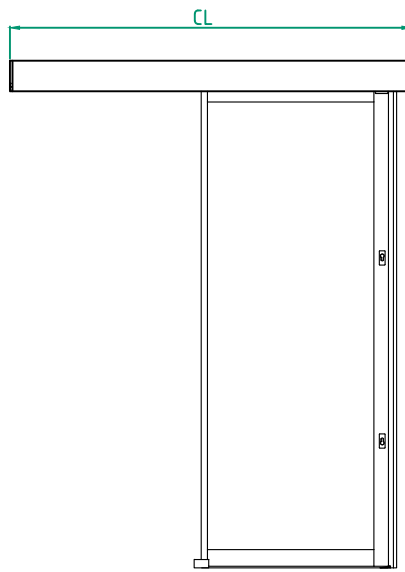
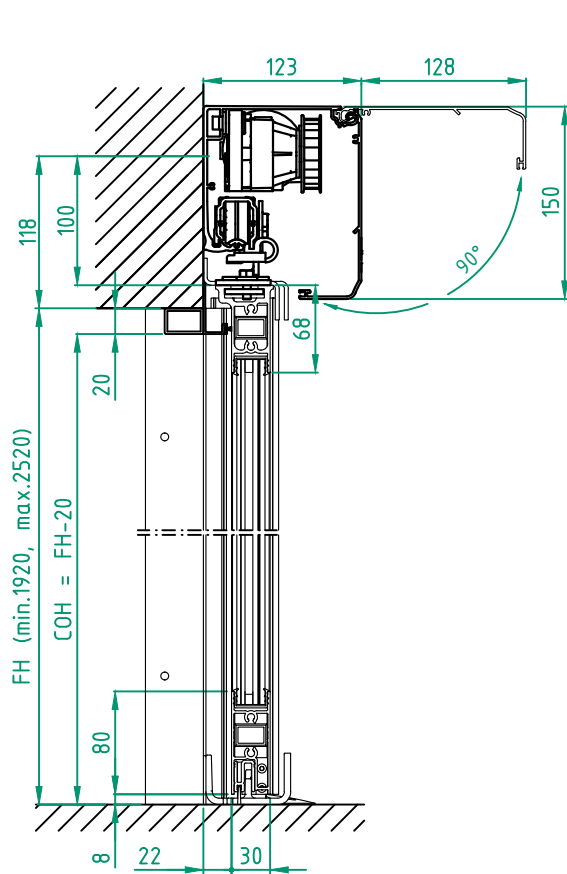
☐ Floor heating
☐ Other

Customer:	Ref:	Automatic door system Besam Slim Thermo RC2 2 Panel wall mounted bipart Art. No. 1015771-2PB-15 Besam SL500
Door id:	Date:	
Project No:	Sign:	

ASSA ABLOY

1.0 1015771-EI

All rights in and to this material are the sole property of ASSA ABLOY Entrance Systems AB. Copying, scanning, alterations or modifications are expressly forbidden without the prior written consent of the applicable company within ASSA ABLOY Entrance Systems AB. Rights reserved for changes without prior notice.



STATE WHEN ORDERING

FW = mm
FH = mm
COW = mm
COH = mm
CL = mm

Surface treatment

- ☐ Silver anodized
- Special anodized
- RAL
- Special powder coating

Options see layers:

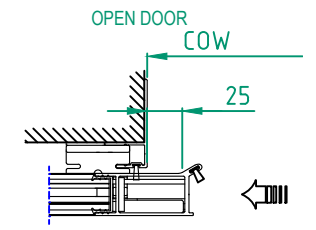
- ☐ Alternative F (concrete/brick)
- ☐ Alternative U (aluminium/steel)

Glass option see drw. 1009030

Glass code:

Installation

- ☐ Floor heating
- ☐ Other



Customer: _____

Door id: _____

Project No: _____

Ref: _____

Date: _____

Sign: _____

Automatic door system
Besam Slim Thermo RC2 1 Panel wall mounted opening left
Art. No. 1015771-1PS-15
Besam SL500

ASSA ABLOY

1.0 1015771-EI

