

Product datasheet

Vertical lifting fabric door

Crawford VL3116

ASSA ABLOY

ASSA ABLOY Entrance Systems

The global leader in
door opening solutions



Copyright and Disclaimer Notice

Although the contents of this publication have been compiled with the greatest possible care, ASSA ABLOY Entrance Systems cannot accept liability for any damage that might arise from errors or omissions in this publication. We also reserve the right to make appropriate technical modifications/replacements without prior notice.

No rights can be derived from the contents of this document.

Color guides: Color differences may occur due to different printing and publication methods.

ASSA ABLOY, Besam, Crawford, Megadoor and Albany, as words and logos, are examples of trademarks owned by ASSA ABLOY Entrance Systems or companies within the ASSA ABLOY Group.

Copyright © ASSA ABLOY Entrance Systems AB 2006-2015.

No part of this publication may be copied or published by means of scanning, printing, photocopying, microfilm or any other process whatsoever without prior permission in writing by ASSA ABLOY Entrance Systems.

All rights reserved.

Technical facts

Features

| | |
|-----------------------|--|
| Max size: (W / H)* | 14000 x 16000 mm |
| Door leaf thickness: | 160 mm |
| Fabric types: | Standard: Polyester (coating: plasticised PVC) Options: Arctic, sound reduction, heat resistant, security |
| Color: | 9 standard colours |
| Guide rails material: | Aluminium |
| Windows: | Vision panels (width 800 mm standard) |
| Seals: | Bottom, side and top seal |
| Operation: | Standard: Electrical operator Optional: Automated operation, Access control, Safety functions |

* Other sizes may be available on request

Performance

| | |
|---|--|
| Operating speed: | 0.2 - 0.3 m/sec |
| Wind load resistance*: (differential pressure) | 0.45-1.6 kPa, depending on size (class 2 - 5, EN 12424) |
| Wind speed, door in motion: | < 20 m/s |
| Sound reduction (standard): | 15 dB Rw (ISO 717) |
| Water resistance: | 0.11 kPa (for a closed door) (class 3, EN 12425) |
| Air permeability: | 12 m ³ /(m ² h) (class 2, EN 12426) |
| Operating environment temperature range: | -35 °C to +70 °C |

* Higher wind loads on request.

Contents

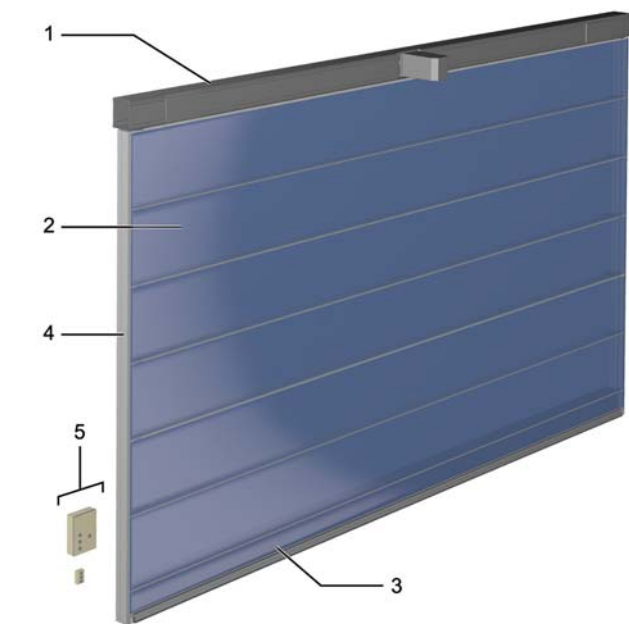
| | |
|--|----|
| Copyright and Disclaimer Notice | 2 |
| Technical facts | 3 |
| Contents | 4 |
| 1. Description | 6 |
| 1.1 General | 6 |
| 1.1.1 Standard | 6 |
| 1.1.2 Options | 6 |
| 1.2 Door leaf | 7 |
| 1.2.1 Construction | 7 |
| 1.2.2 Intermediate section | 7 |
| 1.2.3 Bottom section | 7 |
| 1.2.4 Safety arresters | 7 |
| 1.2.5 Material | 8 |
| 1.2.6 Colors | 8 |
| 1.2.7 Options | 8 |
| 1.3 Guide rails | 9 |
| 1.3.1 Jams | 9 |
| 1.3.2 Wind deflectors | 10 |
| 1.4 Header box | 10 |
| 1.4.1 Header box options | 10 |
| 1.4.2 Self-supporting header box | 11 |
| 1.5 Operating system | 11 |
| 1.5.1 Electrical operation | 11 |
| 1.5.2 Belt system | 11 |
| 1.5.3 Gear motor | 11 |
| 1.5.4 Control unit | 12 |
| 1.5.5 Safety edge | 12 |
| 1.5.6 Access and automation | 12 |
| 2. Specifications | 15 |
| 2.1 Clear width and clear height | 15 |
| 2.2 Performance | 15 |
| 2.3 Environmental tolerance | 15 |
| 2.4 Surface treatment | 15 |
| 2.5 Door leaf | 16 |
| 2.5.1 Fabric data | 16 |
| 2.6 Operating system | 20 |
| 2.6.1 General specifications | 20 |
| 3. CEN Performance | 21 |
| 3.1 Lifetime expectation | 21 |
| 3.2 Resistance to wind load | 21 |
| 3.3 Resistance to water penetration | 21 |
| 3.4 Air permeability | 21 |
| 3.5 Thermal transmittance | 22 |
| 3.6 Acoustic insulation | 22 |
| 3.7 Operating forces and safe openings | 22 |

| | | |
|-------|---|----|
| 4. | Building and space requirements | 23 |
| 4.1 | Building preparations | 23 |
| 4.1.1 | Installation of the header box..... | 23 |
| 4.1.2 | Installation of the guide rails | 25 |
| 4.1.3 | Installation of the control unit..... | 26 |
| 4.2 | Space requirements | 26 |
| 4.2.1 | Space requirements for operation..... | 27 |
| 4.2.2 | Space requirements for control unit..... | 27 |
| 4.2.3 | Space requirements for maintenance | 28 |
| 4.2.4 | Space requirements - Installation against wall | 29 |
| 4.2.5 | Space requirements - Installation in door opening | 30 |
| 4.2.6 | Space requirements - Installation with self-supporting header box | 31 |
| 5. | Service | 32 |
| | Index | 33 |

1. Description

1.1 General

The Crawford VL3116 vertical lifting fabric door is especially designed for extreme industrial environments where doors are exposed to moisture, dust and very high or low temperatures, or where the door opening is large. The unique design and structure offers durability, tightness, energy efficiency, operational reliability and minimum maintenance. Every door is individually designed to meet application requirements, for example wind load.



The Crawford VL3116 vertical lifting fabric door has five main components:

- 1) Header box
- 2) Door leaf
- 3) Bottom section
- 4) Guide rails
- 5) Control cabinet

1.1.1 Standard

The Crawford VL3116 vertical lifting fabric door is supplied with the following specifications as standard:

| | |
|------------|---|
| Door leaf: | Polyester, 1100 dtex with plasticised PVC coating |
| Safety: | Safety arresters Optical safety edge |
| Operation: | Operator + control unit |
| Colors: | Choice of 9 standard colours |

1.1.2 Options

ASSA ABLOY Entrance Systems provides a wide range of options and accessories to customise the Crawford VL3116 vertical lifting fabric door to any customers needs. For example:

| | |
|--------------|---|
| Door leaf: | Arctic, heat resistant, sound reduction and security fabrics Vision panels |
| Guide rails: | Jambs for protection and insulation Heating cables |
| Header box: | Protective cladding |
| Colors: | Optional colors on request |
| Operation: | Automation |

1.2 Door leaf

1.2.1 Construction

The door leaf is made of two layers of very strong vinyl-coated polyester fabric, separated by aluminium intermediate sections. The aluminium top section is bolted to the header box, the steel and aluminium bottom section is connected to the lifting belt via the safety arresters.

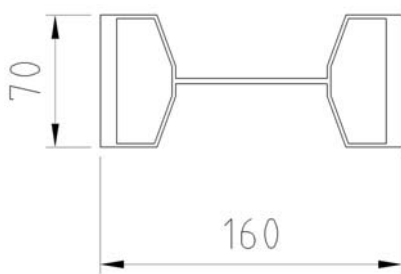
The fabric is attached to both sides of the intermediate sections, top section and bottom section with self-tapping screws through aluminium clamp strips, providing maximum tightness.

Wind load is transferred to the vertical guide rails by the horizontal aluminium sections of the door leaf.



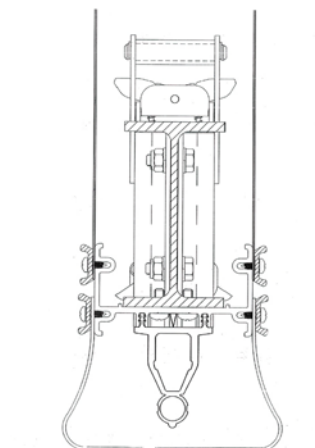
1.2.2 Intermediate section

The intermediate sections give strength to the door leaf and create a buffer between the inside and outside fabric walls. Self-lubricating slide blocks at each end of the intermediate sections run in the guide rails when the door opens and closes.



1.2.3 Bottom section

The bottom section, made of steel and aluminium, is connected to the lifting belt via the safety arresters. The bottom section contains a safety edge and a rubber seal on the bottom edge that creates a seal between the door and the floor.



1.2.4 Safety arresters

The safety arresters are connected to each end of the bottom section. The lifting belt is connected to the safety arresters.

The safety arresters have four hooks. The two upper hooks operate as a wind lock when the door is closed. The two lower hooks are the safety hooks and grip the guide rails to stop the door if the lifting belt becomes slack or, in an unlikely event, would break.



1.2.5 Material

Standard Fabric

The standard door-leaf fabric is a single sheet of heavy-duty vinyl-coated polyester. The fabric is resistant to mechanical abrasion and sparks generated from mechanical processes such as welding.

The standard fabric is available in 9 standard colours, however other colors are available on request.

Arctic Fabric

The arctic fabric replaces the standard fabric in environments where the temperature can be as low as -54°C.

Sound-reduction Fabric

The sound-reduction fabric is for use in environments where the transmission of sound through the door must be reduced. It is installed on both sides of the door leaf behind the standard fabric.

Heat-resistant Fabric

The heat-resistant fabric replaces the standard fabric on the inside of the door leaf when there is a requirement to contain heat and/or chemical hazards. It is available with three different coatings dependant on the environment where it is going to be used.

Security Fabric

The security fabric is for use in environments where security is important. It is similar to the standard fabric with the addition of galvanized steel wires inside the fabric. It is installed on both sides of the door leaf behind the standard fabric to a height of about two meters.

Vision Panels

Vision panels (windows) are available for the standard and arctic fabrics to improve light admission and visibility through the door leaf. The vision panels are available in four different sizes.

1.2.6 Colors

The RAL-colors are as close as possible to the official RAL HR collection.

1.2.6.1 Standard colors



Translucent white

1.2.6.2 Optional colors

Other colors are available on request.

1.2.7 Options

Painted clamp strips

Painted clamp strips are available in the same standard colors as the fabric.

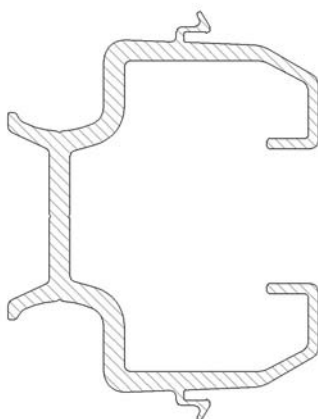
The benefits of the clamp strip covers are:

- Improve the appearance of the door leaf
- Protect the door leaf from discoloration in certain environments.

1.3 Guide rails

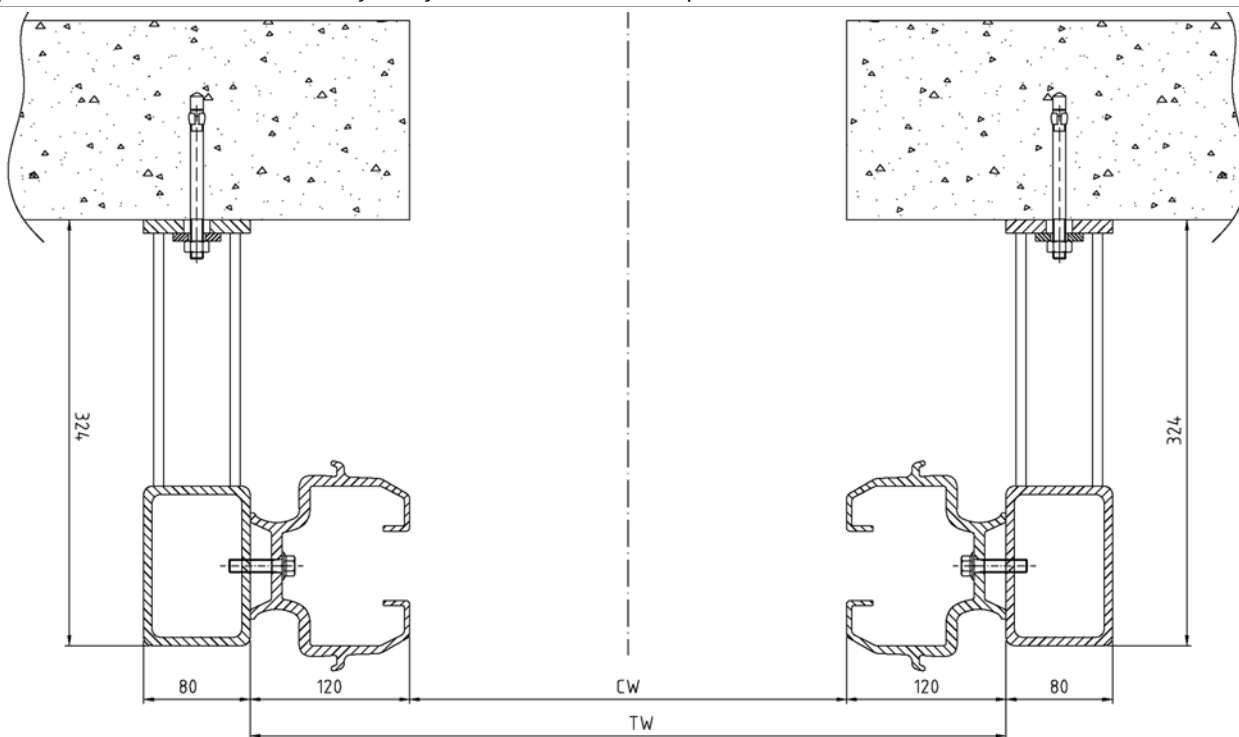
The vertical guide rails are made from extruded aluminium. The lubrication-free slide blocks at each end of the door leaf sections travel through these guide rails.

The guide rails have weather sealing on the inside and outside faces. There is also a space inside the guide rails for the lifting belt of the drive unit and safety arresters.



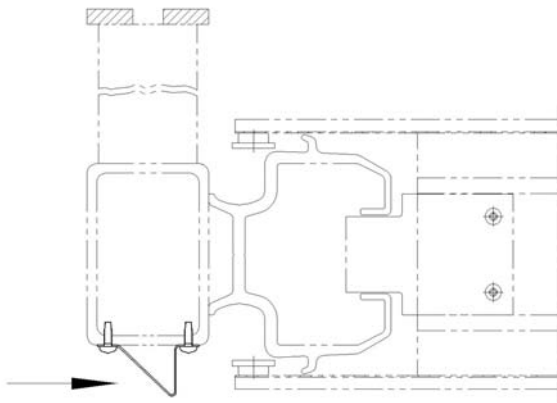
1.3.1 Jambs

If posts for installing the guide rails are not available, stable jambs can be provided. These jambs can be installed, against a concrete or steel wall structure, in the same way as the guide rails. It is possible to insulate the jambs, but material for the purpose is not included in the delivery. The jambs are made of steel painted black.



1.3.2 Wind deflectors

Used with jambs to avoid strong side winds, pressing sand or snow inside the door leaf.



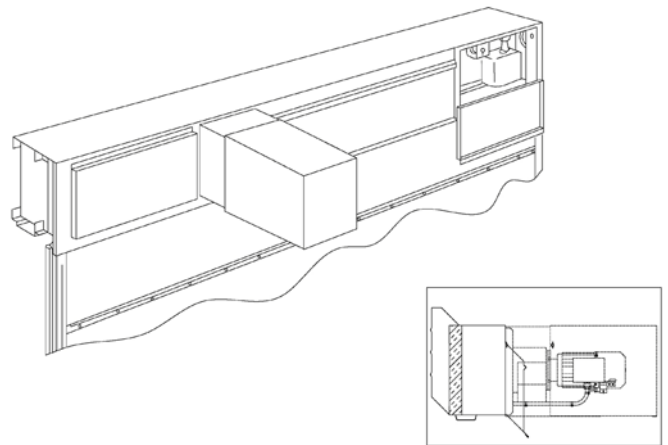
1.4 Header box

The header box contains the gear motor, the belt drum, lifting belts, pulleys and limit switch boxes. It can be installed with the gear motor on the inside or the outside of the building. As standard, the motor side of the header box is enclosed by powder-coated sheet steel covers. Cover plates allow access to components that need maintenance.

1.4.1 Header box options

1.4.1.1 Non-motor side covered

If the header box is positioned in the door opening with the gear motor facing inwards, the non-motor side should be fitted with a cover. An inspection can still be done from the motor side, in this case from inside the building. The header box can be insulated as an option.



1.4.1.2 Protective casing for motor

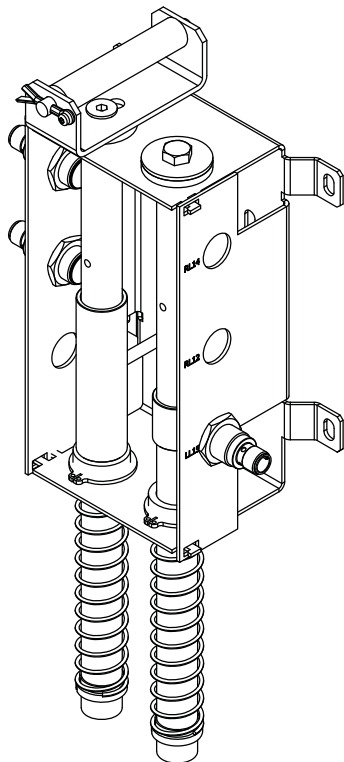
In corrosive or dirty environments, the motor should be fully protected. The protective casing is made of powder-coated sheet steel. The casing has a hatch to facilitate easy access to the motor for emergency operation. The casing is detachable. Existing doors can also be equipped with a protective casing.

1.4.1.3 Stainless steel cladding and motor casing

In corrosive environments, the header box, including the mechanical unit, can be enclosed in stainless steel casing.

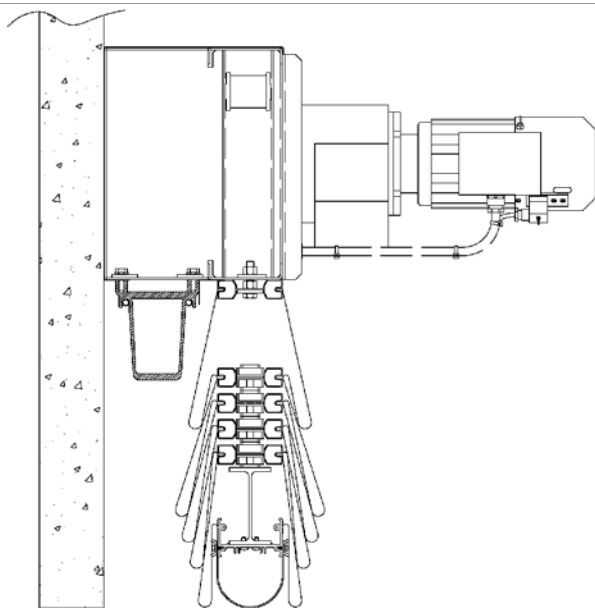
1.4.1.4 Limit switch boxes

The limit switch boxes contain inductive proximity switches with high ingress protection level (IP67) and temperature tolerance.



1.4.2 Self-supporting header box

If there is no suitable installation surface above the door opening, a self-supporting header box can be installed. A supporting beam, installed on the bottom of the header box, transfers the weight of the header box and the door leaf via the jambs to the building.



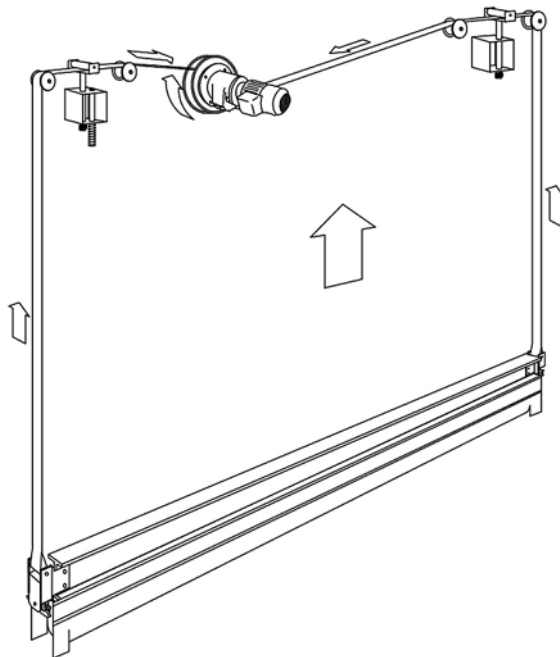
1.5 Operating system

1.5.1 Electrical operation

The Crawford VL3116 vertical lifting fabric door is always supplied with an electrical operating system, a control unit near the door and a gear motor in the header box.

The door is opened by an impulse from the UP-button or from an optional device, such as a radar or magnetic loop.

The door is closed by an impulse from the DOWN-button or by an optional device.



1.5.2 Belt system

The belt system consists of one lifting belt that can withstand corrosion, dust and dirt. This belt is connected to the safety arresters at both ends of the bottom section, through the guide rails, up to the belt drum. The belt drum is installed on the output shaft of a braked reduction-geared motor by a keyed joint.

1.5.3 Gear motor

The gear motor is suited for the actual weight of the door leaf. The electric gear motor winds the belt onto a drum.

In the event of a power failure, the door can be manually operated by means of a hand crank connected to the motor.

1.5.4 Control unit

The door is supplied with a PLC-based control unit installed near the door. The control unit commands the gear motor via push buttons or via external activators, e.g. a mechanical loop or radar.

The UP and DOWN buttons are operated by impulse. The DOWN button can be set to hold-to-run. The gear motor can be disabled from the control unit for emergency hand-crank operation by switching off the mains.



1.5.4.1 PLC

The control unit contains a PLC for the setting of timers, automatic and safety functions. The PLC is programmed and configured before delivery. The menu* gives the following information:

- Number of days of operation and number of door openings from the start since the door was last serviced.
- Current settings
- Alarm codes

* Optional human machine interface display required.

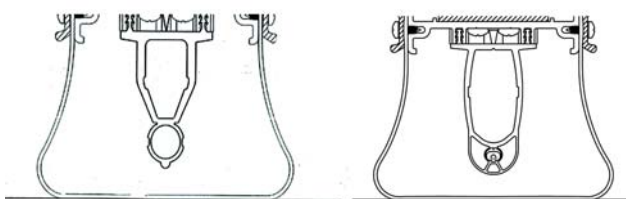
1.5.4.2 Temperature control

An optional heating element can be installed in the control unit, to avoid moisture inside the unit at low and variable temperatures and in moist air

1.5.5 Safety edge

The Crawford VL3116 vertical lifting fabric door has a safety edge on the bottom of the door. If the door hits an obstacle, the door will stop and return to its original position. The safety edge is either optical or conductive.

In an optical safety edge an IR beam runs through an enclosed rubber tube. The steel profile in the bottom section ensures a straight line across the entire width of the door. The optional conductive rubber safety edge has a pre-fitted resistor that is monitored through wires extruded through the length of the rubber. The wires are connected to two separated conductive rubber surfaces.



1.5.6 Access and automation

ASSA ABLOY Entrance Systems offers a wide range of functions that allow advanced opening and safety control.

1.5.6.1 Basic control functions

Hold-to-run control

If required, the door can be supplied without safety edge, with closing by hold-to-run control as only alternative.

Interlocking



Developed for climate control or safety; if door A is open, door B cannot be opened. If door B is open; door A cannot be opened.

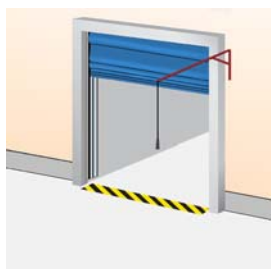
Reduced opening



When it is unnecessary or undesirable to fully open a door, an additional timer can be used to open the door to a pre-programmed reduced opening position.

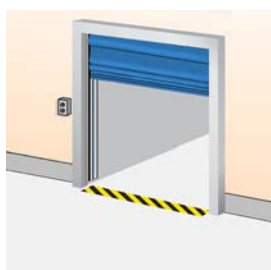
1.5.6.2 External control functions

Pull-rope switch



A pull rope switch next to the door opening can be operated from e.g. a forklift truck. Pulling the rope opens a closed door or closes an open door. Installed on the wall, with bracket.

External push button box



An extra control box is installed outside the building or inside close to the door if the main control unit needs to be installed away from the door opening. Installed on the inside or outside wall beside the door.

Remote control



A hand-held radio transmitter allows door operation from a vehicle or any position within 50-100 meters from the receiver and aerial at the door. For closing, the door can be provided with a photocell beam. A receiver is installed either inside or next to the control unit.

1.5.6.3 Automatic control functions

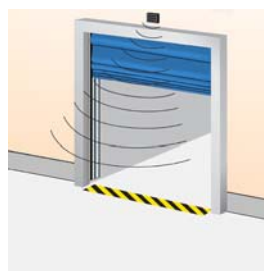
The function of all sensors is individually configurable in the HMI display. Interlock/safety, automatic opening, automatic closing and alternating automatic opening and closing are selectable functions.

Magnetic loop



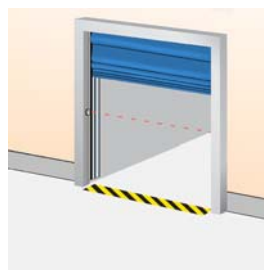
A sensor in the floor detects a metal object (usually forklift trucks, pallet trucks). This is an ideal solution for frequent vehicle traffic. Installed on the outside, inside or both sides of the door in the ground.

Radar



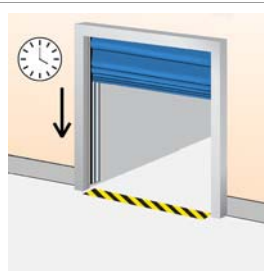
An infrared sensor above the door detects an object (person, vehicle) within a specified distance from the door. This is an ideal solution for frequent vehicle or personal traffic. Often combined with automatic closing. Installed on the inside or outside wall above the door.

Photocell



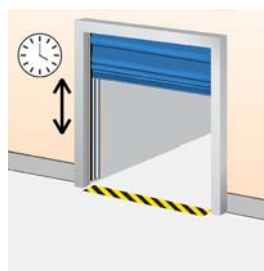
A set of photocells is installed on pillars, on each side of the door. When a person or vehicle passes between the photocells, the beam is interrupted.

Automatic closing



A programmable timer that closes the door after a specified time, counted from either the fully open position and/or from passing through the photocell beam. Selector switch in control unit.

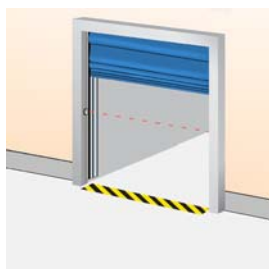
Automatic opening and closing



A programmable timer that closes the door after a specified time, counted from either the fully open position and/or from passing the photocell beam. A sensor, e.g. a magnetic loop or a radar, is used for automatic opening. Selector switch in control box and magnetic loop or radar.

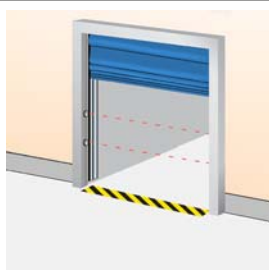
1.5.6.4 Safety functions

Safety photocells 1-channel



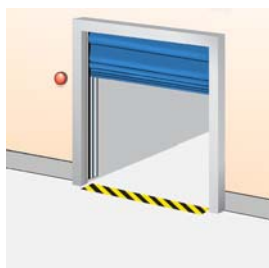
A set of a photocell transmitter with reflector or receiver is installed in the door opening. If the photocell beam is interrupted during closing, the door will stop and reverse to the fully open position. Installed in the door opening.

Safety photocells 2-channel



Two sets of photocell transmitters with reflectors and receivers are installed in the door opening. If one or both photocell beams are interrupted during closing, the door will stop and reverse to the fully open position. Installed in the door opening.

Warning lights - Red



One or two red warning lights indicating that the door is moving or closed; continuous light when the door is closed, flashing light when the door is moving or not fully open. Installed on the inside and/or outside wall beside the door.

Warning lights - Green



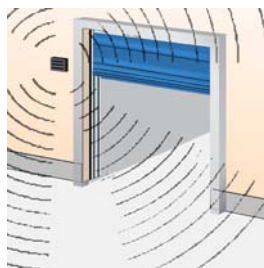
One or two green warning lights indicating the open position of the door by continuous light signal. Installed on the inside and/or outside wall beside the door.

Warning lights - Orange flashing lights



Flashing light during door movement. Optional; Flashing lights during an adjustable time period before automatic closing. Automatic closing required. Installed on the inside and-or outside wall beside the door.

Acoustic signal



An acoustic signal is given, starting just before the door begins to open or close and continues until the door is fully opened or closed. Installed on the wall beside the door.

Emergency power switch



An external power switch can be enabled, as a backup system, in case of a power failure. Supplied with steel casing and power inlet socket.

1.5.6.5 Additional functions

Increased opening speed

The door can be equipped with an optional motor that doubles the opening speed to 0.4 - 0.6 m/s.

2. Specifications

2.1 Clear width and clear height

The standard Crawford VL3116 vertical lifting fabric door is delivered in the following size range:

Standard door sizes*

| | Clear width | Clear height |
|-------|-------------|--------------|
| Min.: | | |
| Max.: | 14000 mm | 16000 mm |

* Other sizes may be available on request

2.2 Performance

| | |
|---|--|
| Operating speed: | 0.2 - 0.3 m/sec |
| Wind load resistance*: (differential pressure) | 0.45-1.6 kPa, depending on size (class 2 - 5, EN 12424) |
| Wind speed, door in motion: | < 20 m/s |
| Sound reduction (standard): | 15 dB Rw (ISO 717) |
| Water resistance: | 0.11 kPa (for a closed door) (class 3, EN 12425) |
| Air permeability: | 12 m ³ /(m ² h) (class 2, EN 12426) |
| Operating environment temperature range: | -35 °C to +70 °C |

* Higher wind loads on request.

2.3 Environmental tolerance

| | |
|---------------------------|------------------------------|
| Heat and cold resistance | -35°C to +70°C |
| Atmospheric humidity | below dew point |
| Presence of particles | < 1000 µg/m ³ air |
| Mechanical load, blasting | Not directly aimed. |
| Wind speed, in motion | < 20 m/s |
| Acidity | Condensate at 5<pH<9 |
| Explosive fumes or dust | No occurrence. |

*In the normal version, the door is suited for operation in environments within the limits stated above. If the requirements exceed these limits (e.g. wind load), the door can often be modified on request.

2.4 Surface treatment

| | |
|------------------|---|
| Steel components | For corrosion, category 3 according to ISO 12944.2. Higher class on request. |
| Other parts | Aluminium, plastic, stainless steel, zinc electroplated steel (~ 10µ). Fixing elements are zinc electroplated (~ 10 µ). |
| | Door leaf screws are corrosion protected with Geomet. |

2.5 Door leaf

2.5.1 Fabric data

2.5.1.1 Standard fabric

| | | | |
|---------------------------|---|--|--|
| Application | Standard | | |
| Use | Standard | | |
| Coating | Plasticized PVC | | |
| Fabric | Polyester, 1100 dtex | | |
| Weight | 700 g/m ² | | |
| Heat- and cold resistance | -35°C to +70°C. DIN EN 1876-2 1998-01. (-30°C to + 70°C for the Translucent white fabric) | | |
| Tensile strength | Warp : 2500N/5 cm acc. DIN 53354, EN ISO 1421 Weft : 2000N/5 cm acc. DIN 53354, EN ISO 1421 | | |
| Tear resistance | Warp : 400N acc. DIN 53363 Weft : 300N acc. DIN 53363 | | |
| Resistance to light | 7 - 8 (on a scale 0-8). ISO 105-B02 1998 | | |
| UV-stabilized | Yes | | |
| Fire classification | M2 (NF P 92 507 2004), B - s2,d0 (EN 13501-1 2007) | | |
| Mildew resistant | Yes | | |
| Rot resistant | Yes | | |
| Radar reflection | 0.3 dB, - 0.1% | | |
| Lacquered | Yes | | |
| Standard colors | <ul style="list-style-type: none"> • Beige NCS 2010Y-40R RAL 1001 • Red NCS 2070-R RAL 3001 • Blue NCS S3560-R80B RAL 5005 • Green NCS 8010-G10Y RAL 6009 • Grey NCS 3500 RAL 7004 • Anthracite grey NCS 8005-B20G RAL 7016 • White NCS 0500 RAL 9016 • White aluminium RAL 9006 • Translucent white | | |
| Logotype | Optional | | |
| Vision panels | Optional | | |

2.5.1.2 Arctic fabric

| | | | |
|---------------------------|--|---|--|
| Application | Environmental temperatures down to -54°C | | |
| Use | Replaces standard fabric | | |
| Coating | Plasticized PVC | | |
| Fabric | Polyester, 1100 dtex | | |
| Weight | 700 g/m ² | | |
| Heat- and cold resistance | -54°C to +70°C. DIN EN 1876-2 1998-01 | | |
| Tensile strength | Warp : 2500N/5 cm acc. DIN 53354, EN ISO 1421 Weft : 2000N/5 cm acc. DIN 53354, EN ISO 1421 | | |
| Tear resistance | Warp : 400N acc DIN 53363 Weft : 300N acc. DIN 53363 | | |
| Resistance to light | 7 - 8 (on a scale 0-8). ISO 105-B02 | | |
| UV-stabilized | Yes | | |
| Fire classification | M2 (NF P 92 507 2004), B - s2,d0 (EN 13501-1 2007) | | |
| Mildew resistant | Yes | | |
| Rot resistant | Yes | | |
| Radar reflection | 0.3 dB, - 0.1% | | |
| Lacquered | Yes | | |
| Standard colors | <ul style="list-style-type: none"> • Beige • Red • Blue • Green • Grey • Anthracite grey • White • White aluminium | NCS 2010Y-40R NCS 2070-R NCS S3560-R80B NCS 8010-G10Y NCS 3500 NCS 8005-B20G NCS 0500 | RAL 1001 RAL 3001 RAL 5005 RAL 6009 RAL 7004 RAL 7016 RAL 9016 RAL 9006 |
| Logotype | Optional | | |

Note! Not in combination with:

- Vision panels
- Sound reduction fabric
- Heat resistant fabric
- Security fabric

2.5.1.3 Sound reduction fabric

| | |
|---|--|
| Application | Sound reduction |
| Use | On both sides of the door behind the standard fabric |
| Coating | Plasticized PVC |
| Fabric | Polyester, 1100 dtex |
| Weight | 1850 g/m ² |
| Sound reduction (incl. standard fabric) | Index Rw23dB*, tested by SP Swedish National Testing and research Institute |
| Heat- and cold resistance | -30°C to +70°C, acc. SFS-EN 1876-1 |
| Tensile strength | Warp: 3000N/5 cm acc. DIN 53354 Weft: 2900N/5 cm acc. DIN 53354 |
| Tear resistance | Warp: 380N acc DIN 53356 Weft: 300N acc. DIN 53356 |
| Fire classification | Acc. SIS 650082, DIN 4102-B1 |
| Comments | Space for fabric folding must be increased by 100 mm on each side of the door, to avoid fabric wear. |

Note! Must always be quoted by ASSA ABLOY Entrance Systems.

* Weighted apparent sound reduction index acc. ISO 717-1. For more information, ask for SP-report P103341, dated 15 June 2001 'Determination of sound insulation of an industrial door according to SS-EN ISO-140-3:95'.

2.5.1.4 Heat resistant fabric - Silicone rubber coating

| | |
|----------------------------|--|
| Application | <ul style="list-style-type: none"> Hot air environment Coating highly resistant to chemicals Good soil and oil repellent properties. |
| Use | Replacing standard fabric |
| Coating | Silicon rubber on both sides |
| Fabric | Woven glass fibre EC9-136 acc. to DIN53830-3 |
| Weight | 560 g/m ² |
| Temperature resistance | +280°C |
| Tensile strength warp/weft | 800 / 600 N / 5 cm acc. to ISO 13934-1 |
| Fire classification | M1 acc. to NF P92-507 ISO 5660-1 IMO Res. A.653 (16) IMO Res. MSC 41 (64) IMO FTP Code, Annex 2, section 2.2 |
| Comments | <ul style="list-style-type: none"> Never combine standard and heat resistant fabric (for example upper part of the door with standard and lower part of the door with heat resistant fabric). Protect the bottom sealing with the fabric as well. When the door is installed against a wall on the cool side, the folding space on the hot side must be increased by at least 100 mm to avoid fabric wear. The motor should be placed on the cool side. A heat radiation shield below the motor may be necessary. All cables must be protected. The clear height should be as large as possible. |

Note! Must always be quoted by ASSA ABLOY Entrance Systems.

2.5.1.5 Heat resistant fabric - Aluminium coating

| | |
|---------------------------|--|
| Application | Hot air and high radiation temperatures inside (e.g. foundries). Good heat reflection properties. |
| Use | On the inside of the door (never on the outside) replacing standard fabric. |
| Coating | Aluminium pigments on polyurethane adhesive on one side of the fabric. |
| Fabric | E-glass EC9-136 (cross twill) |
| Weight | 490 g/m ² |
| Heat- and cold resistance | From contact coating +200°C (not continuously) |
| Tensile strength | Warp : 800N/cm acc. DIN 53857 T1 Weft : 500N/cm acc. DIN 53857 T1 |
| Fire classification | DIN 4102-1 A2 |
| Comments | <ul style="list-style-type: none"> • Never combine standard and heat resistant fabric (for example upper part of the door with standard and lower part of the door with heat resistant fabric). • Protect the bottom sealing with the fabric as well. • When the door is installed against a wall on the cool side, the folding space on the hot side must be increased by at least 100 mm to avoid fabric wear. • The motor should be placed on the cool side. A heat radiation shield below the motor may be necessary. • All cables must be protected. • The clear height should be as large as possible. |

Note! Must always be quoted by ASSA ABLOY Entrance Systems.

2.5.1.6 Heat resistant fabric - Aluminium polyurethane coating

| | |
|---------------------|--|
| Application | Fire resistant |
| Use | On the inside of the door (never on the outside) replacing standard fabric. |
| Coating | Two sides aluminium grey polyurethane |
| Thickness | 0.8 mm |
| Fabric | Woven glass fibre, Atlas 1/8 |
| Weight | 690 g/m ² |
| Heat resistance | +450°C |
| Tensile strength | Warp : 1350N/cm acc. EN ISO 13934-1 Weft : 1260N/cm acc. EN ISO 13934-1 |
| Fire classification | Incombustible according to M0 (French standard) |
| Comments | <ul style="list-style-type: none"> • Never combine standard and heat resistant fabric (for example upper part of the door with standard and lower part of the door with heat resistant fabric). • Protect the bottom sealing with the fabric as well. • When the door is installed against a wall on the cool side, the folding space on the hot side must be increased by at least 100 mm to avoid fabric wear. • The motor should be placed on the cool side. A heat radiation shield below the motor may be necessary. • All cables must be protected. • The clear height should be as large as possible. |

Note! Must always be quoted by ASSA ABLOY Entrance Systems.

2.5.1.7 Security fabric

| | |
|---------------------------|---|
| Application | Protection against burglary |
| Use | On both sides of the door, behind the standard fabric. Up to approximately 2 meters from the floor |
| Fabric | PVC coated |
| Reinforcement | Multi-axial laid construction of galvanized steel wires |
| Weight | 1350 g/m ² |
| Heat- and cold resistance | -30°C to +70°C |
| Fire classification | Not classified |
| Comments | Space for fabric folding must be increased by 100 mm on each side of the door, to avoid fabric wear. |

Note! Must always be quoted by ASSA ABLOY Entrance Systems.

2.5.1.8 Vision panels

| | |
|-----------------------------------|---|
| Application | Light admission and view through |
| Use | Only for standard fabric |
| Standard sizes | Width 800 or 1300 mm, height between the intermediate profiles (depending on door size) |
| Material | Elaston 064, 1 mm |
| Weight | 1230 g/m ² |
| Hardness | 77° shore acc. DIN 53505 |
| Heat- and cold resistance | -30°C to +50°C |
| Tear resistance acc. DIN 53455 | Along : 21 N/mm ² Crosswise : 20 N/mm ² |

2.6 Operating system

2.6.1 General specifications

| | |
|-----------------------------------|--|
| Control system | PLC-based |
| Protection class, control cabinet | IP65 |
| Protection class, limit switches | IP65 |
| Protection class, motor brake | IP55 |
| Protection class, push buttons | IP65 |
| Power supply | 3/phase 400V 50Hz. Other alternatives available on request |
| Control voltage | 24V AC |
| Fusing | 20 A |
| Free contacts (option) | 6 for control of user functions |
| Heat and cold resistance | -35 °C to +70 °C |
| Motor ratings | 2.8 - 5.0 kW |

3. CEN Performance

The following tests have been carried out by the Swedish National Testing and Research Institute (SP) in Borås. For more detailed information and values, see ITT report: 0402-CDP-397307.

3.1 Lifetime expectation

- 100.000 door cycles

3.2 Resistance to wind load

EN12424

| | |
|-------------|-------------------------------------|
| Test result | Class 2-5 (depending on door size). |
|-------------|-------------------------------------|

| Class | Pressure Pa (N/m ²) | Specification |
|-------|---------------------------------|---|
| 0 | - | No performance determined |
| 1 | 300 | |
| 2 | 450 | |
| 3 | 700 | |
| 4 | 1000 | |
| 5 | > 1000 | Exceptional : Agreement between manufacturer and supplier |

3.3 Resistance to water penetration

EN12425

| | |
|-------------|------------------|
| Test result | Class 3 (110 Pa) |
|-------------|------------------|

| Class | Pressure Pa (N/m ²) | Specification |
|-------|---------------------------------|---|
| 0 | - | No performance determined |
| 1 | 30 | Water spray for 15 minutes |
| 2 | 50 | Water spray for 20 minutes |
| 3 | > 50 | Exceptional : Agreement between manufacturer and supplier |

3.4 Air permeability

EN12426

| | |
|-------------|---------|
| Test result | Class 2 |
|-------------|---------|

| Class | Air permeability dp at a pressure of 50 Pa (m ³ /m ² /h) |
|-------|--|
| 0 | - |
| 1 | 24 |
| 2 | 12 |
| 3 | 6 |
| 4 | 3 |
| 5 | 1,5 |
| 6 | Exceptional : Agreement between manufacturer and supplier |

3.5 Thermal transmittance

EN12428

| | |
|-----------------------|---|
| Thermal transmittance | Depending on door size. Specific data available on request. |
|-----------------------|---|

3.6 Acoustic insulation

ISO 717

| | |
|---------------------|-------|
| Acoustic insulation | 15 dB |
|---------------------|-------|

3.7 Operating forces and safe openings

| EN12453 & EN12604 | Crushing force N | Crushing force N | Crushing force N |
|-------------------|--|--------------------------------------|---|
| Opening gap mm | 200 mm from lateral border right from outside | In the middle of the door opening | 200 mm from lateral border left from outside |
| 50 mm | passed | passed | passed |
| 300 mm | passed | passed | passed |

The crushing force is the force needed for the safety edge to be activated. The maximum force allowed, according to EN12453 safety in use of power operated doors is 400 N within a maximum period of time of 0.75s.

4. Building and space requirements

4.1 Building preparations

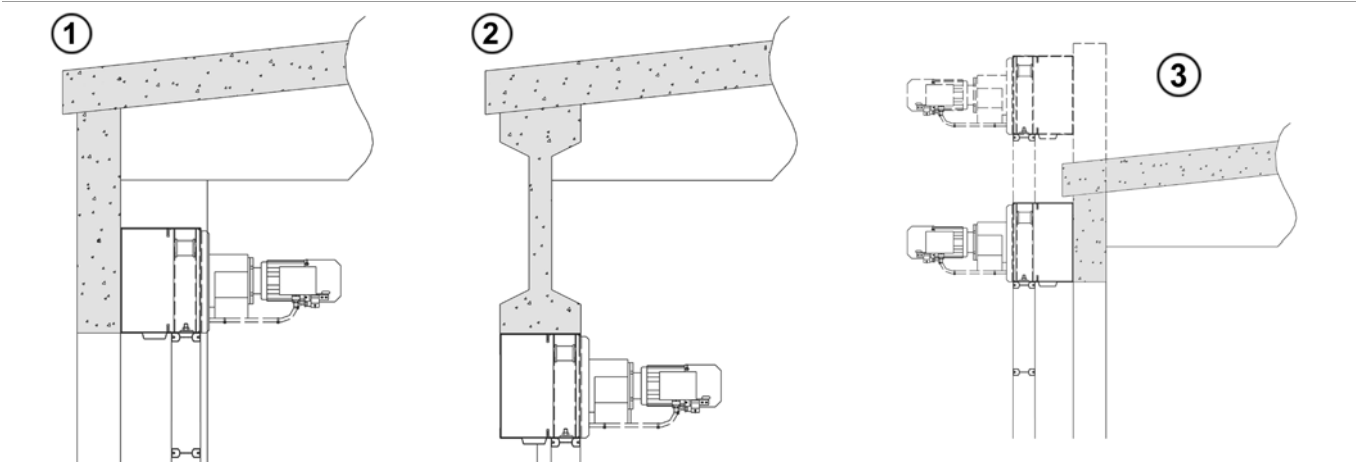
4.1.1 Installation of the header box

4.1.1.1 Basic installation

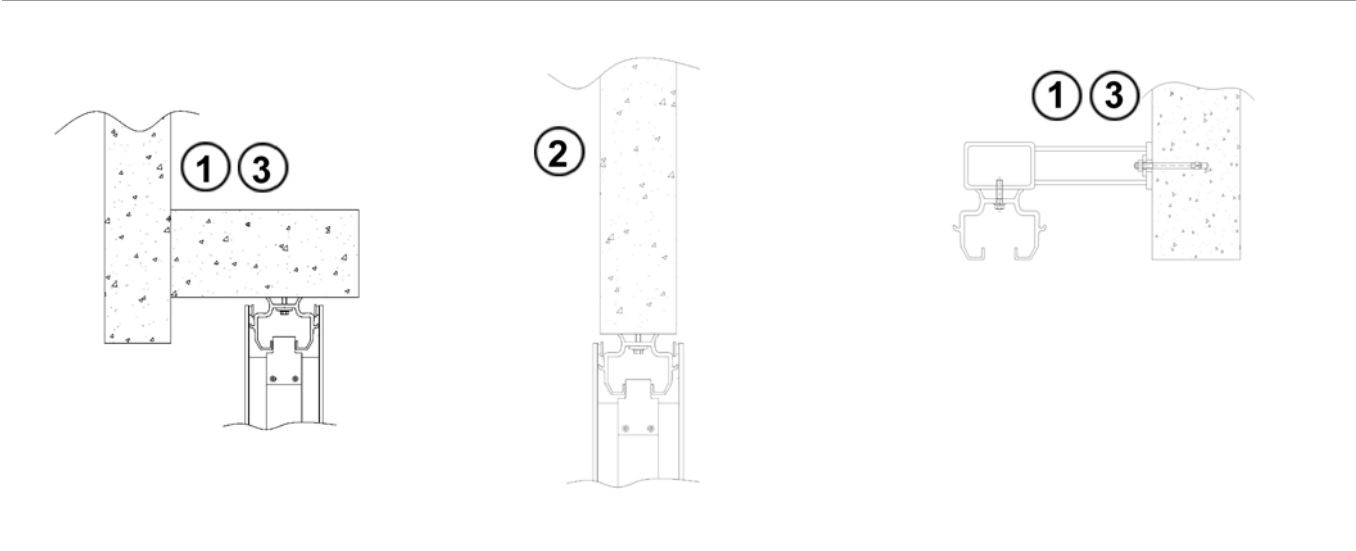
The Crawford VL3116 vertical lifting fabric door can be installed in three ways:

| 1. Installation on internal wall | 2. Installation in door opening | 3. Installation on external wall |
|--|---|---|
| Recommended if the size of the door opening permits it. The drive machinery and guide rails will then be fully protected. | Excellent alternative for an existing door opening. The risk of colliding with the guide rails should be negligible, or a collision shield should be used as protection. | Alternative when the inside environment is severe or when there is insufficient space above the door opening. |

Side view header box



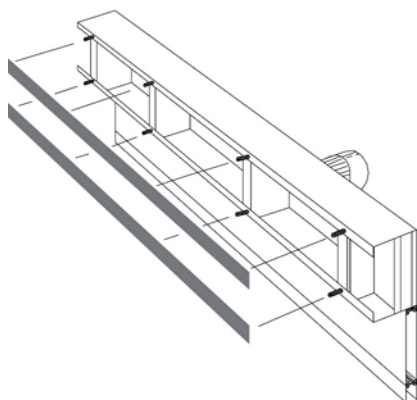
Top view guide rail and door leaf



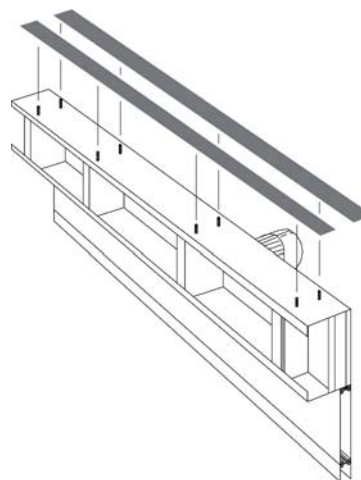
Installation surfaces for the header box must be flat, parallel and deviate maximum 5 mm from a horizontal line.

Min. thickness (t) of installation surface: steel 10 mm, concrete 110 mm. Min. width of each installation surface : 100 mm.

Installation surfaces – on wall

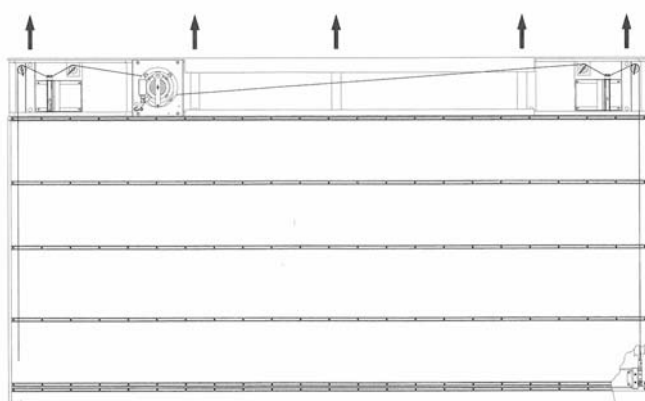


Installation surfaces – in door opening

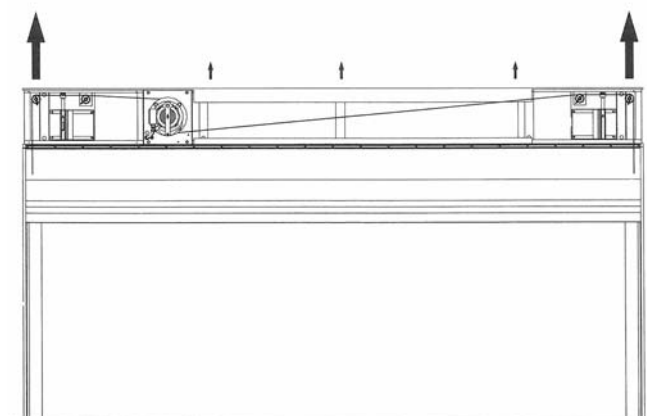


4.1.1.2 Load on the building

Door closed



Door opened

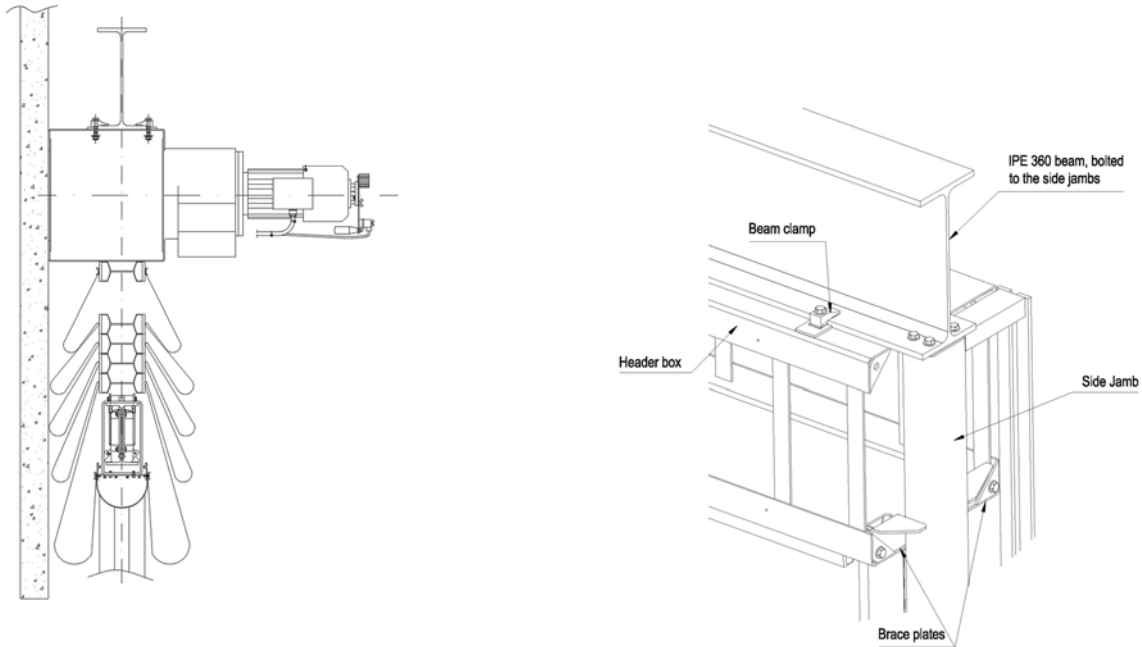


When the door is closed, the total weight is distributed on the fixing points. The distance between fixing points is about 1000 mm. The door leaf itself does not weigh more than 50 to 185 kg per meter width but, in view of the extra load which may result in the event of a collision, the total load of the building should be calculated at 3kN/m.

The load of the door leaf is successively transferred to the ends of the header box as the door is opened. In this situation it is mainly only the weight of the header box that rests on the other fixing points.

4.1.1.3 Self-supporting installation

Crawford can supply a self-supporting door if there is no suitable mounting surface over the door opening. A supporting beam above the header box transfers the load via the jambs of the door to the building. The jambs take up the forces from the header box, but must be secured to the building.



4.1.2 Installation of the guide rails

4.1.2.1 Basic installation

When the door is installed on an existing surface, this surface must be made either from steel or concrete. The installation surfaces must be strong, smooth and parallel and deviate max. 5 mm from the vertical and 2 mm in the inward/outward direction from the vertical.

- Min. thickness of installation surface : steel 8 mm, concrete 100 mm.
- Min. width of installation surface : steel 80 mm, concrete 80 mm.

4.1.2.2 Installation with jambs

When the door is installed on a wall and posts for the installation of the guide rails are not available, jambs of a stable design are provided. The jambs are installed in the same way as the guide rails, by screws or plugs with a spacing of about one meter. The jambs are made of steel painted black.

4.1.3 Installation of the control unit

The location of the control unit is best decided as follows :

| Environment | Effect on control unit | Location of control unit |
|---|--|--|
| Normal environment | Negligible effect, IP65 protection is sufficient. | Close to the door |
| Harsh interior environment | When opened for maintenance, dust and moisture may enter | In a safe area |
| Sustainable temperature difference inside/outside | Condensation when door is opened | Away from the door. Push button unit close to the door |
| Strongly corrosive environment, no safe location possible | Optimum protection required | Stainless steel control unit |

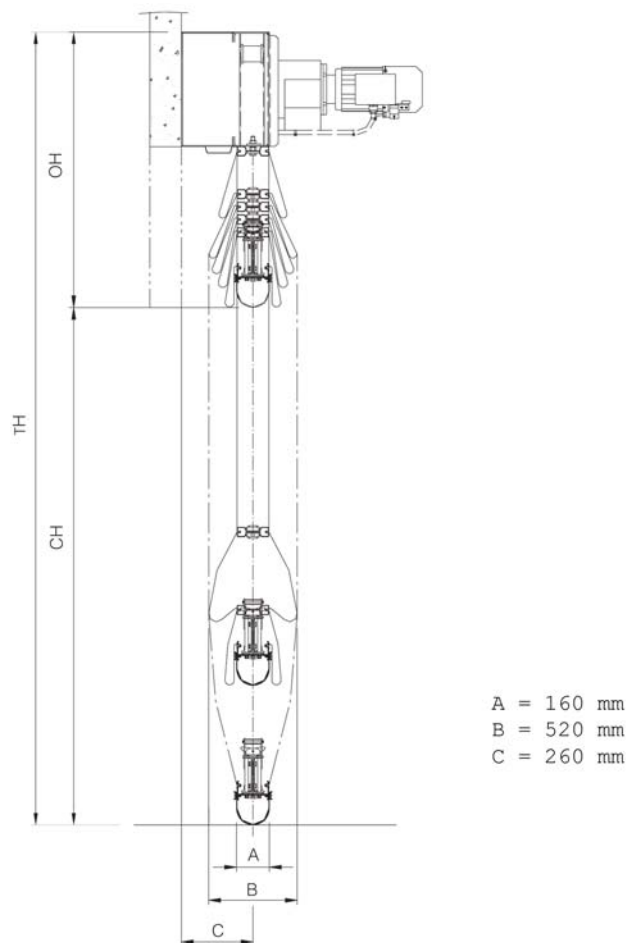
Also consider the space requirements of the control unit.

4.2 Space requirements

| | | |
|----|-------------------------|--|
| TH | Total height | Distance between floor and top of header box |
| CH | Clear height | Distance between floor and bottom of door leaf when door is fully opened |
| OH | Over height | Vertical space required above the clear height |
| TS | Total space requirement | Distance between outer side of jambs |
| TW | Total width | Distance between the left and right vertical installation surfaces. |
| CW | Clear width | Clearance distance between the left and the right guide rails. |
| MD | Motor depth | Depth of the header box + gear motor + extra space for hand crank |
| A | | Door leaf thickness |
| B | | Minimum free space required for fabric folding |
| C | | Distance from rear side of header box to guide rail centre |

4.2.1 Space requirements for operation

In contrast to other types of doors, the Crawford VL3116 vertical lifting fabric door requires only limited top and side space. The door leaf is compressed when opened. Even for a large door, the requirements are minimal.



For calculation of actual total height, contact the ASSA ABLOY Entrance Systems representative in your area.

4.2.2 Space requirements for control unit

The following dimensions (w x h x d) may be of assistance in deciding where to place the control cabinet, possible additional cables or an additional safety switch for the power supply :

| | |
|---|--------------------|
| Control unit size (carbon steel or stainless steel) | 500 x 600 x 250 mm |
|---|--------------------|

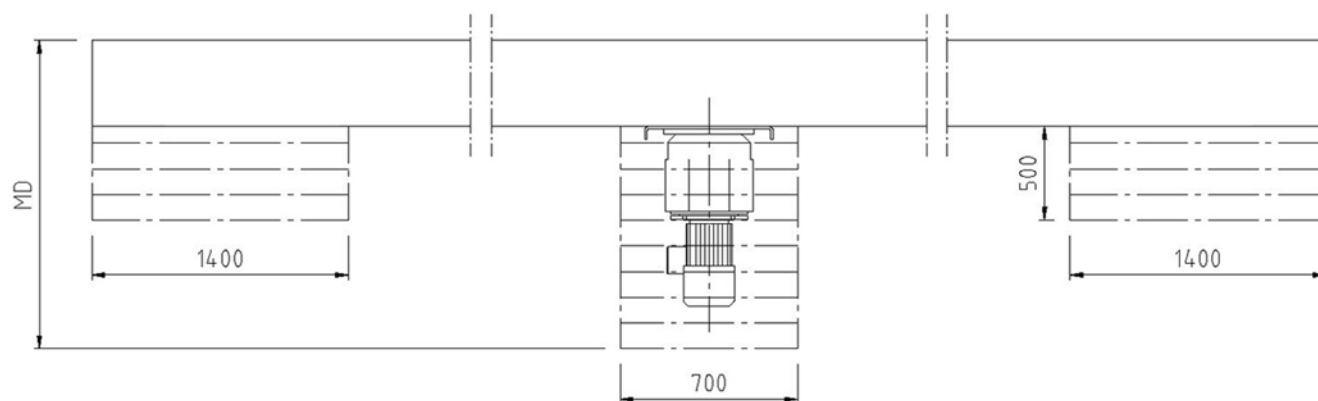
4.2.3 Space requirements for maintenance

MD = Motor depth. Depending on motor size.

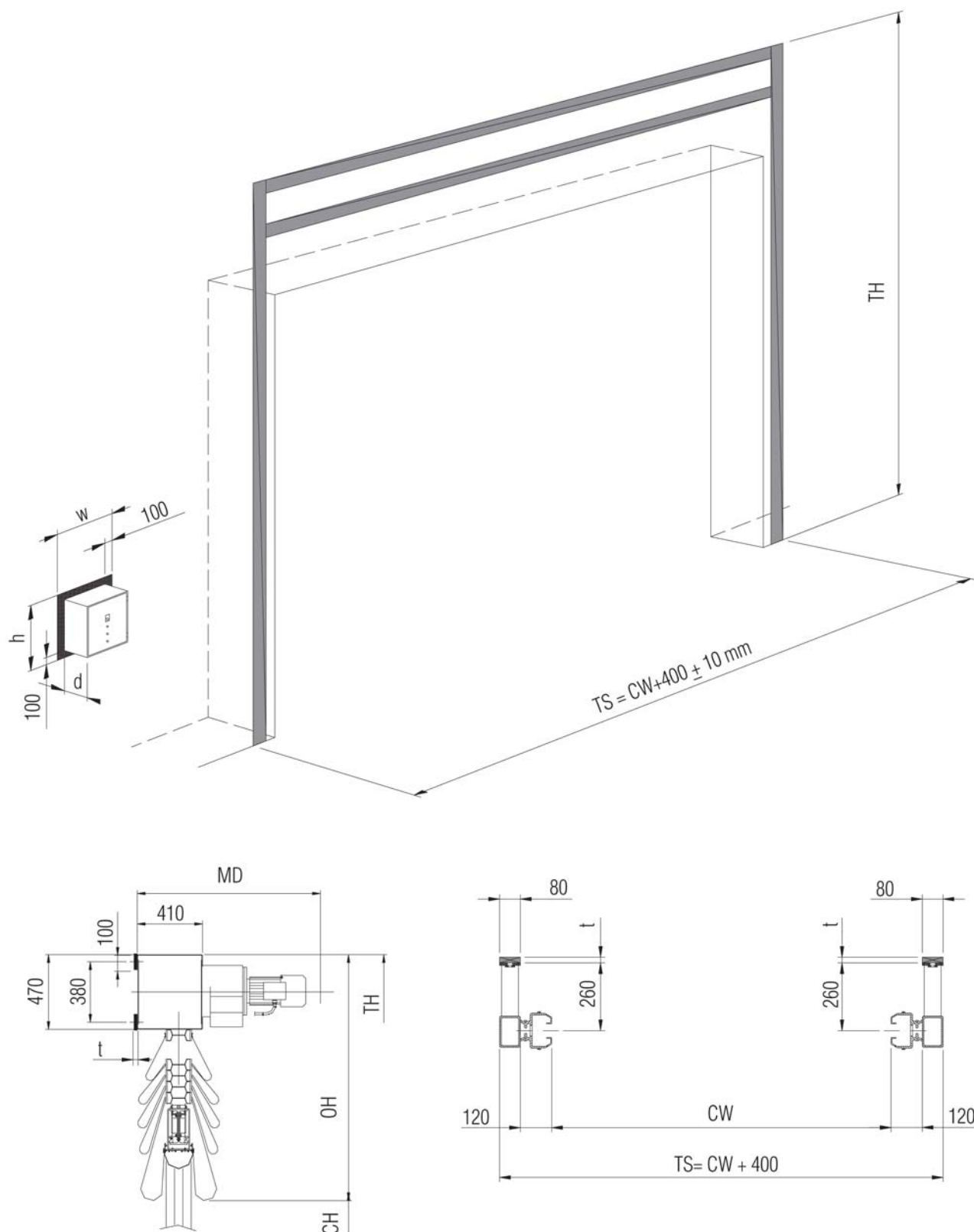
MD = 1000-1200 mm (+ 200 mm for hand crank).

Gear motor

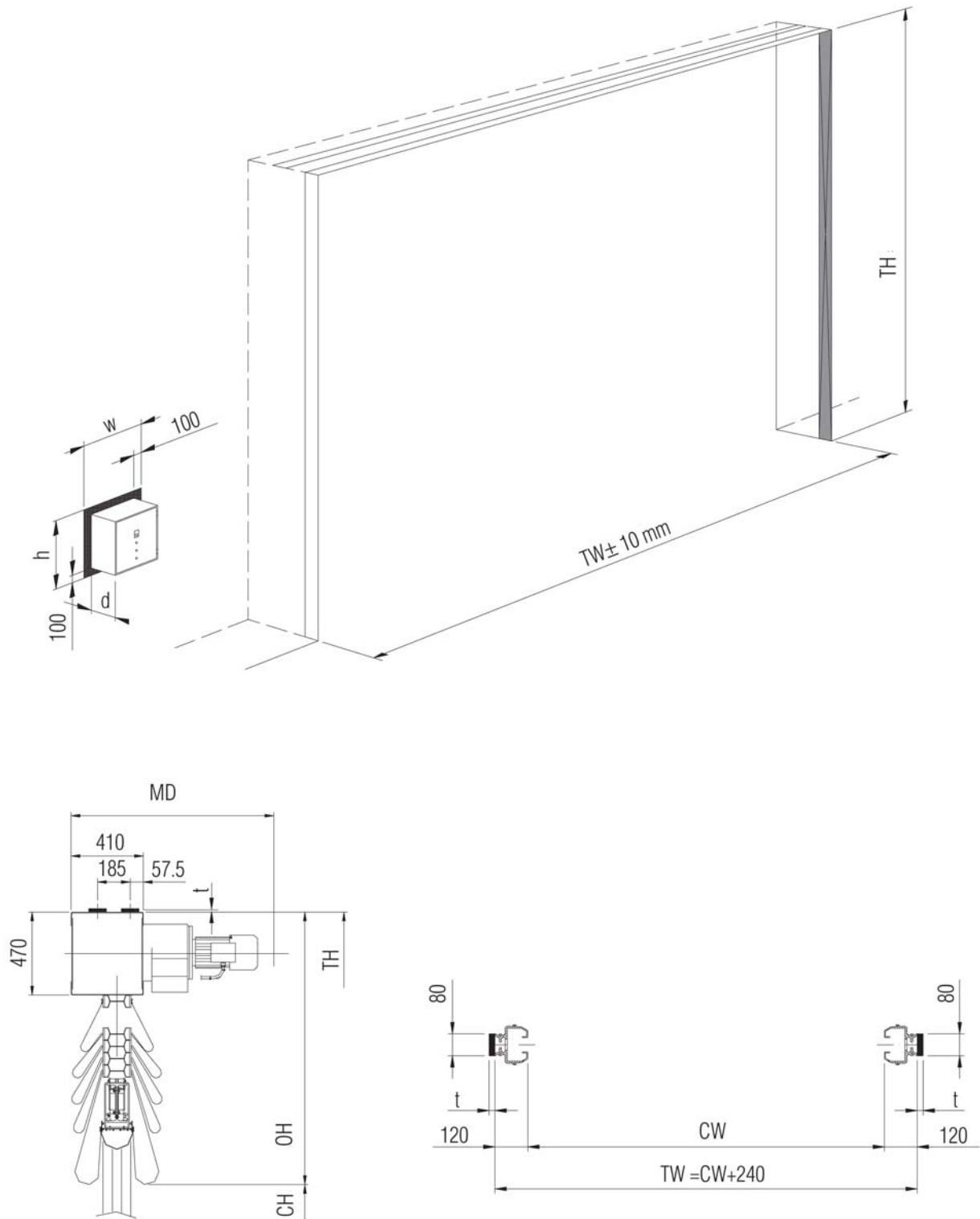
Limit switches



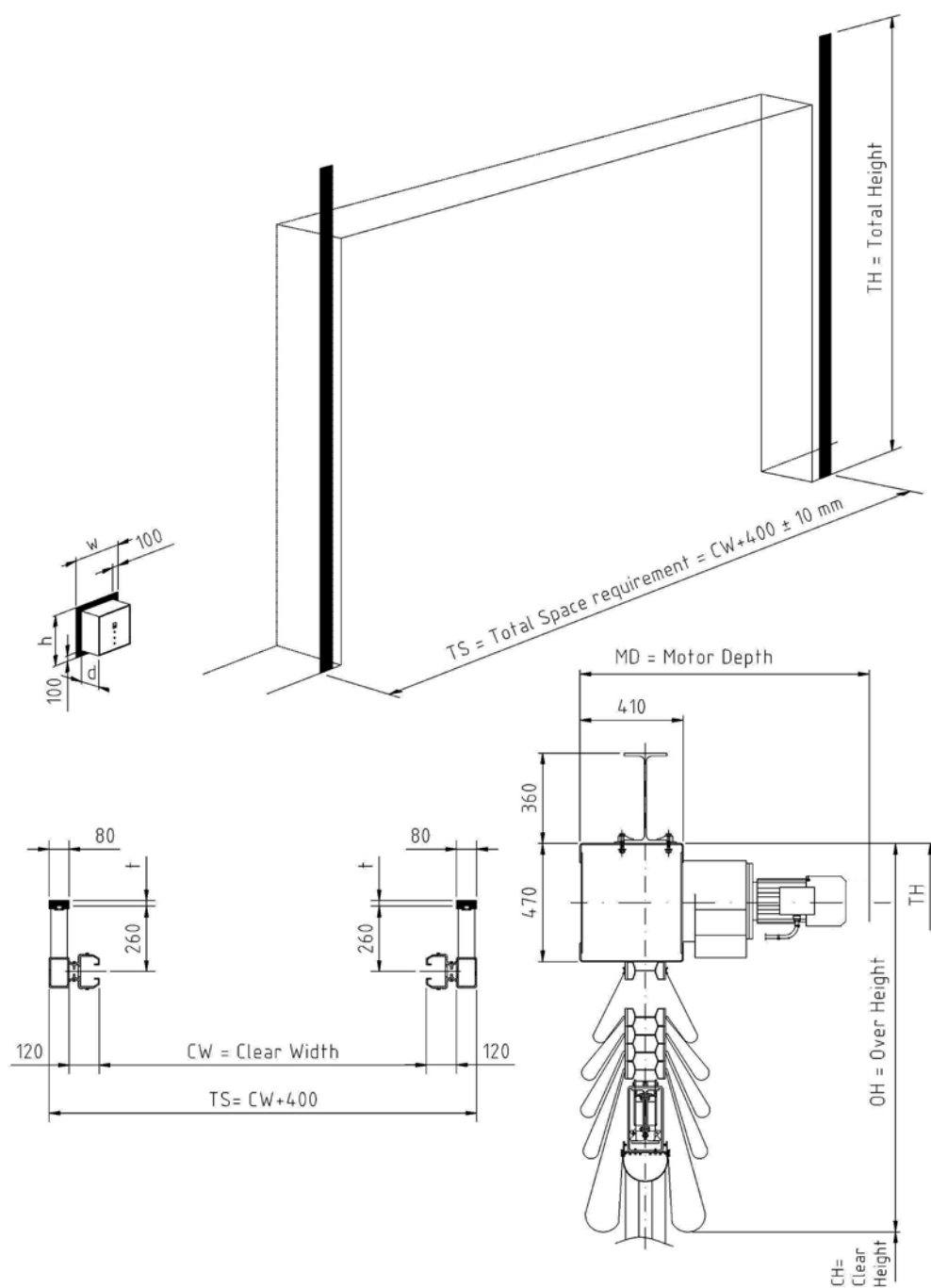
4.2.4 Space requirements - Installation against wall



4.2.5 Space requirements - Installation in door opening



4.2.6 Space requirements - Installation with self-supporting header box



5. Service

Preventive Maintenance Program and Modernization Services

As your entrances are part of your business flow, there's every reason to keep them working well. ASSA ABLOY Entrance Systems offers you a maintenance and modernization expertise to rely on. Our Maintenance Programs and Modernization Services are backed by a extensive expertise for all types of industrial door and docking systems, independent of brand. At your disposal is a team of dedicated expert technicians, proven through decades of maintenance, service and satisfied customers.

Preventive Maintenance Programs

Minimizing lost time, lost energy and unexpected hassle is our team's constant objective. Our service organization can support you 24/7 in maintaining all industrial door and docking systems, independent of brand. If you want to be one step ahead of break-downs, explore our portfolio of Pro-Active Care plans. Naturally, we also offer entrance upgrades to suit your specific wishes and business needs.

Pro-Active Care - Maintenance plans to fit your business

Regular maintenance can extend the lifetime of your equipment and help prevent unexpected problems. Our technician arrives on-site equipped with the knowledge and tools to service all automatic entrances, independent of brand.

• Pro-Active Bronze

The base on which all Pro-Active Plans are built provides the security of knowing that your equipment is regularly inspected and certified for safety, as well as performing optimally. It includes a number of planned on-site visits depending on your needs. Any unplanned service calls required during the term of the contract (including labor, travel and parts) are billed at special Pro-Active Care prices.

• Pro-Active Silver

This plan provides all the benefits of Pro-Active Bronze with the added advantage of labor and travel being included for service calls during regular business hours. The only additional charge would be for any parts that may be needed throughout the term of the contract.

• Pro-Active Gold

This plan provides the ultimate protection for your automatic entrance investment. It includes all the benefits of Pro-Active Silver, plus replacement of any parts required during an unplanned repair or planned maintenance visit. Pro-Active Gold is an excellent way to budget your automatic door expenses annually.

• Pro-Active Tailor-Flex

Our most flexible maintenance and service offering. The Pro-Active Care plan is designed by you, our customer. The plan allows you to balance your maintenance expenses against your real-world budget and presents the option to add or delete a number of maintenance elements to suit your budget goals, while meeting your overall performance and safety needs.

Modernization

Your entrances are a long-term investment, from which you always want the best. Products develop over time, so do regulations and your business. Let us help you increase energy savings and meet today's standards. We provide advice and modernization kits for outdated installations, ensuring your investment meet requirements and performs optimally for many more years to come.

| Re-Active Service | | Pro-Active Care | | | | |
|-------------------|-------------|-------------------|-------------------|-----------------|------------------------|---|
| | | ○ | ○ | ○ | ● | Other customized requests such as Response Time, Performance InfoPack and Advanced User Training |
| | | ○ | ○ | ● | ○ | Replacement of worn parts according to preventive Consumable Exchange Program |
| | | ○ | ○ | ● | ○ | Replacement of spare parts on breakdowns |
| | | ○ | ● | ● | ○ | Travel and labor for additional call-out visits |
| | | ● | ● | ● | ● | Preventive maintenance visits 1-4 times per year |
| | | ● | ● | ● | ● | Travel and labor for preventive maintenance visits |
| | | ● | ● | ● | ● | Response time and priority on call-outs <24h |
| | | ● | ● | ● | ● | Preventive planned maintenance that meets the most demanding standards in the market |
| | ● | ● | ● | ● | ● | Safety and quality checks according to applicable regulations and norms. Documentation of test results provided |
| ● | ● | ● | ● | ● | ● | Documentation of equipment status, assessment and service provided, all generated on site |
| ● | ● | ● | ● | ● | ● | Highly trained professional technicians with extensive knowledge, state-of-the-art tools and the right spare parts* |
| ● | ● | ● | ● | ● | ● | Dedicated Professional Customer Care Hotline |
| Corrective | SafetyCheck | Pro-Active Bronze | Pro-Active Silver | Pro-Active Gold | Pro-Active Tailor Flex | |

● = Included as standard
○ = Available at special prices
* Well-stocked service vehicles with genuine and new spare parts

Index

A

| | |
|-------------------------------------|----|
| Access and automation | 12 |
| Acoustic insulation | 22 |
| Acoustic signal | 14 |
| Additional functions | 14 |
| Air permeability | 21 |
| Arctic fabric | 17 |
| Automatic closing | 13 |
| Automatic control functions | 13 |
| Automatic opening and closing | 13 |

B

| | |
|---------------------------------------|--------|
| Basic control functions | 12 |
| Basic installation | 23, 25 |
| Belt system | 11 |
| Bottom section | 7 |
| Building and space requirements | 23 |
| Building preparations | 23 |

C

| | |
|---------------------------------------|----|
| CEN Performance | 21 |
| Clear width and clear height | 15 |
| Colors | 8 |
| Construction | 7 |
| Control unit | 12 |
| Copyright and Disclaimer Notice | 2 |

D

| | |
|-------------------|-------|
| Description | 6 |
| Door leaf | 7, 16 |

E

| | |
|----------------------------------|----|
| Electrical operation | 11 |
| Emergency power switch | 14 |
| Environmental tolerance | 15 |
| External control functions | 13 |
| External push button box | 13 |

F

| | |
|-------------------|----|
| Fabric data | 16 |
| Features | 3 |

G

| | |
|------------------------------|----|
| Gear motor | 11 |
| General | 6 |
| General specifications | 20 |
| Guide rails | 9 |

H

| | |
|--|----|
| Header box | 10 |
| Header box options | 10 |
| Heat resistant fabric - Aluminium coating | 19 |
| Heat resistant fabric - Aluminium polyurethane coating | 19 |
| Heat resistant fabric - Silicone rubber coating | 18 |
| Hold-to-run control | 12 |

I

| | |
|--|----|
| Increased opening speed | 14 |
| Installation of the control unit | 26 |
| Installation of the guide rails | 25 |
| Installation of the header box | 23 |
| Installation with jambs | 25 |
| Interlocking | 12 |
| Intermediate section | 7 |

J

| | |
|-------------|---|
| Jambs | 9 |
|-------------|---|

L

| | |
|----------------------------|----|
| Lifetime expectation | 21 |
| Limit switch boxes | 11 |
| Load on the building | 24 |

M

| | |
|---------------------|----|
| Magnetic loop | 13 |
| Material | 8 |

N

| | |
|------------------------------|----|
| Non-motor side covered | 10 |
|------------------------------|----|

O

| | |
|--|--------|
| Operating forces and safe openings | 22 |
| Operating system | 11, 20 |
| Optional colors | 8 |
| Options | 6, 8 |

P

| | |
|-----------------------------------|----|
| Performance | 3 |
| Photocell | 13 |
| PLC | 12 |
| Protective casing for motor | 10 |
| Pull-rope switch | 13 |

R

| | |
|---------------------------------------|----|
| Radar | 13 |
| Reduced opening | 12 |
| Remote control | 13 |
| Resistance to water penetration | 21 |
| Resistance to wind load | 21 |

S

| | |
|---|----|
| Safety arresters | 7 |
| Safety edge | 12 |
| Safety functions | 14 |
| Safety photocells 1-channel | 14 |
| Safety photocells 2-channel | 14 |
| Security fabric | 20 |
| Self-supporting header box | 11 |
| Self-supporting installation | 25 |
| Service | 32 |
| Sound reduction fabric | 18 |
| Space requirements | 26 |
| Space requirements - Installation against wall | 29 |
| Space requirements - Installation in door opening | 30 |
| Space requirements - Installation with self-supporting header box | 31 |
| Space requirements for control unit | 27 |
| Space requirements for maintenance | 28 |
| Space requirements for operation | 27 |
| Specifications | 15 |
| Stainless steel cladding and motor casing | 10 |
| Standard | 6 |
| Standard colors | 8 |
| Standard fabric | 16 |
| Surface treatment | 15 |

T

Technical facts3
Temperature control 12
Thermal transmittance22

V

Vision panels20

W

Warning lights - Green 14
Warning lights - Orange flashing lights
14
Warning lights - Red 14
Wind deflectors 10

ASSA ABLOY Entrance Systems is a leading supplier of entrance automation solutions for efficient flow of goods and people. With our globally recognized product brands Besam, Crawford, Megadoor and Albany, we offer products and services dedicated to satisfying end-user needs for safe, secure, convenient and sustainable operations.
ASSA ABLOY Entrance Systems is a division within ASSA ABLOY.

ASSA ABLOY

assaabloyentrance.com

Q1.0 - 2016



ASSA ABLOY Entrance Systems

assaabloyentrance.com